

# WALKER PASS (JACKS CREEK)

Safety Zones- **NONE IDENTIFIED**



## Water Sources

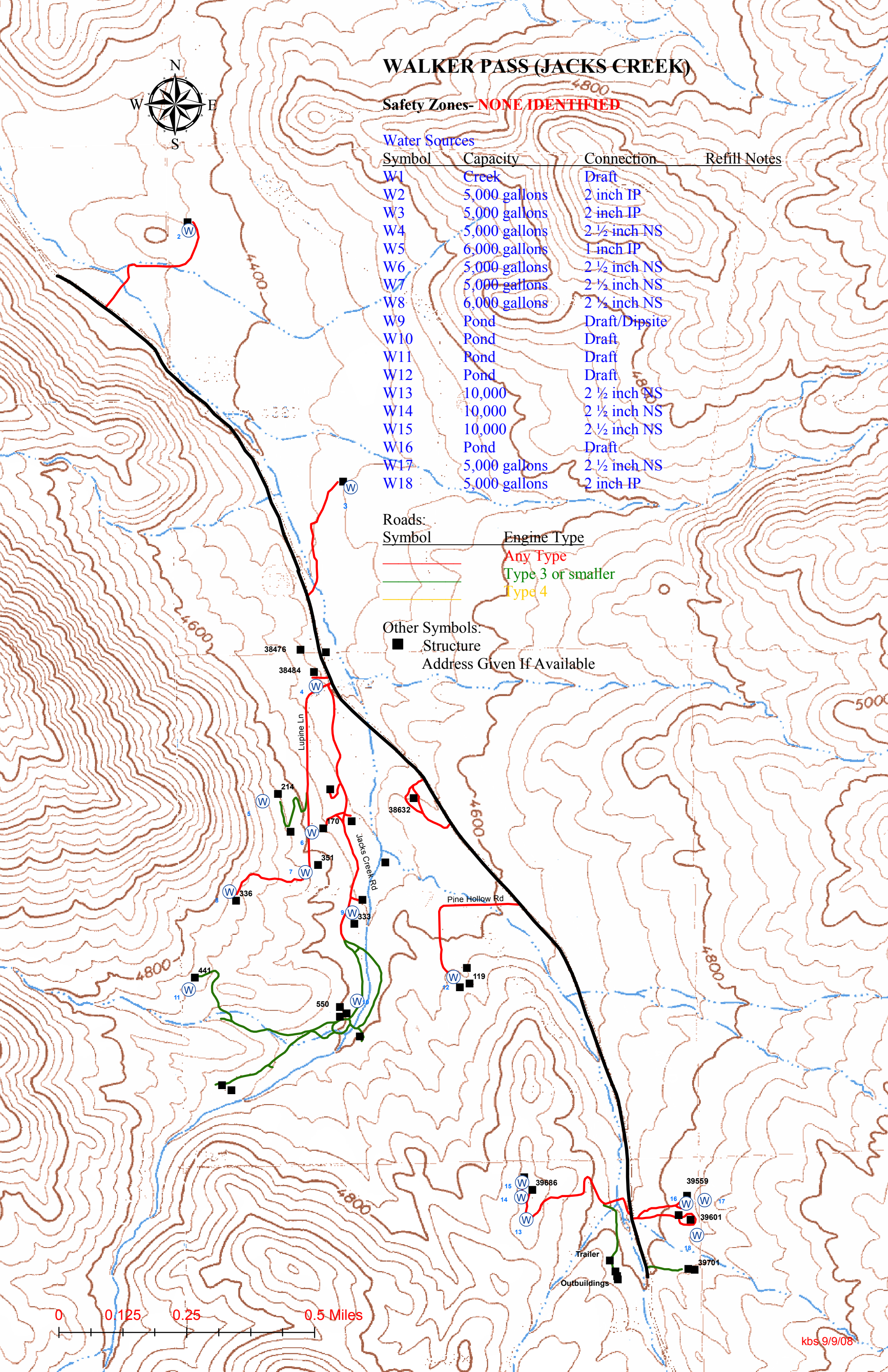
Symbol	Capacity	Connection	Refill Notes
W1	Creek	Draft	
W2	5,000 gallons	2 inch IP	
W3	5,000 gallons	2 inch IP	
W4	5,000 gallons	2 ½ inch NS	
W5	6,000 gallons	1 inch IP	
W6	5,000 gallons	2 ½ inch NS	
W7	5,000 gallons	2 ½ inch NS	
W8	6,000 gallons	2 ½ inch NS	
W9	Pond	Draft/Dipsite	
W10	Pond	Draft	
W11	Pond	Draft	
W12	Pond	Draft	
W13	10,000	2 ½ inch NS	
W14	10,000	2 ½ inch NS	
W15	10,000	2 ½ inch NS	
W16	Pond	Draft	
W17	5,000 gallons	2 ½ inch NS	
W18	5,000 gallons	2 inch IP	

## Roads:

Symbol	Engine Type
<span style="color: red;">—</span>	Any Type
<span style="color: green;">—</span>	Type 3 or smaller
<span style="color: yellow;">—</span>	Type 4

## Other Symbols:

- Structure
- Address Given If Available



0 0.125 0.25 0.5 Miles