

Piute Springs

Map 2

Water Source Details			
Number	Capacity (ga)	Connection (in)	Notes
W1	3500	2.5 NS	Yard Hydrant
W2	3500	2.5 NS	
W3	5000	1.5 NS	
W4	Unknown	Unknown	
W5	5000	2 IP	Yard Hydrant
W6	5800	1.5 NS	
W7	5000	2.5 NS	Yard Hydrant
W8	3500	2.5 NS	
W9	3500	2.5 NS	
W10	Pond	Draft	
W11	3500	2.5 NS	Yard Hydrant
W12	3500	2.5 NS	
W13	3500	2.5 NS	
W14	3500	2.5 NS	
W15	5000	2.5 NS	
W16	5000	2.5 NS	
W17	5000	1.5 IP	Yard Hydrant
W18	3500	2.5 NS	Yard Hydrant
W19	5000	2.5 NS	
W20	5400	2.5 NS	Yard Hydrant
W21	5000	2.5 NS	Yard Hydrant
W22	6500	2 IP	
W23	4500	2.5 NS	
W24	3500	2.5 NS	Yard Hydrant
W25	3500	1.5 IP	Yard Hydrant
W26	3500	2.5 NS	Yard Hydrant
W27	3500	2.5 NS	
W28	3500	2.5 NS	

Engine Type

- Any Type
- Type 3 or Smaller
- Type 4
- - - Impassible



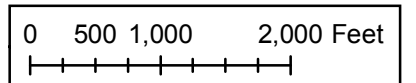
Symbols

- W Water Source (Numbered)
- Structure (Addresses)
- Trailer

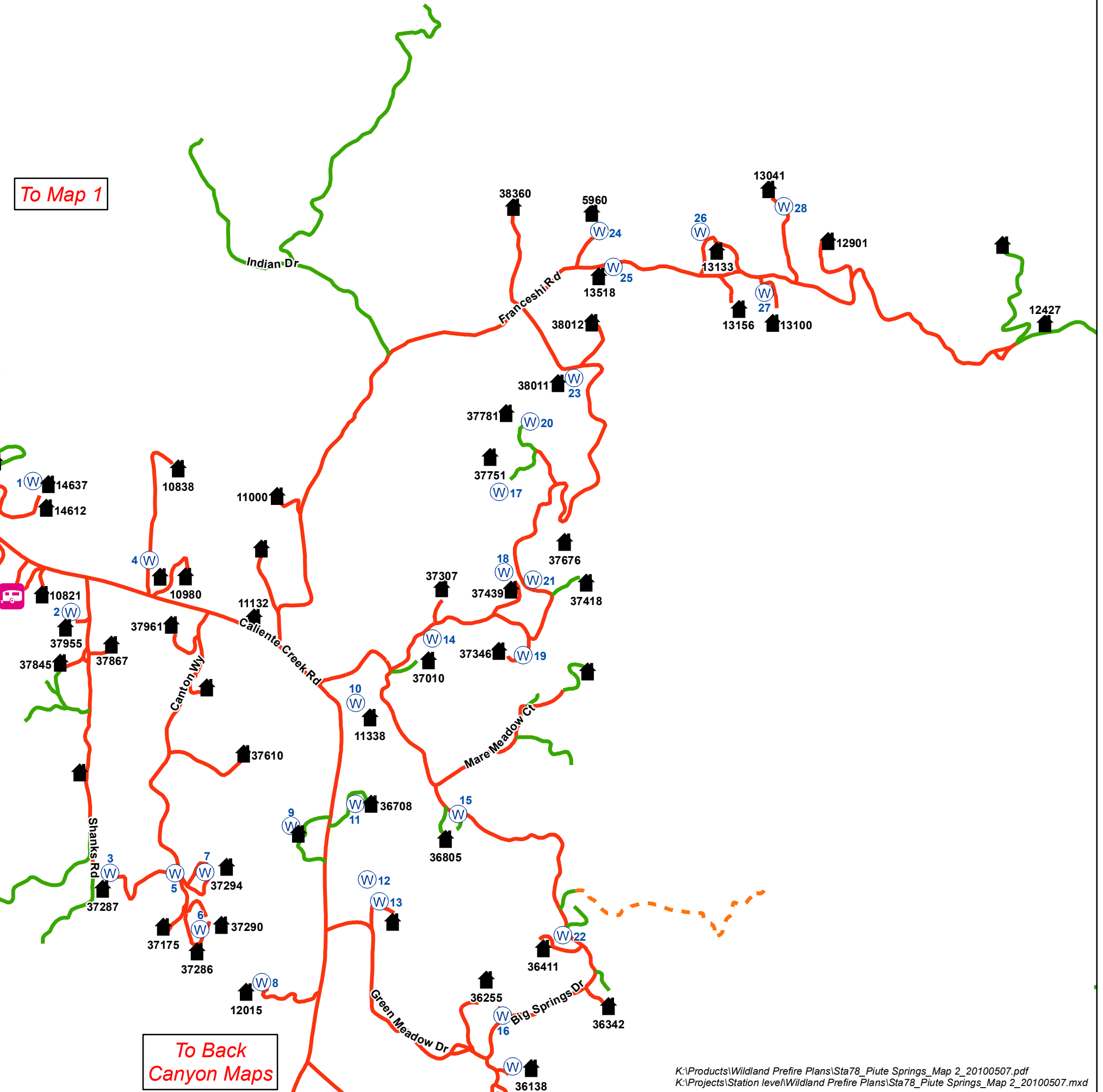
KCRP-GIS
ATP 05-07-10

Special Notes

**NO IDENTIFIED SAFETY ZONES
NO RECENT FUEL TREATMENTS**



To Map 1



To Back
Canyon Maps