

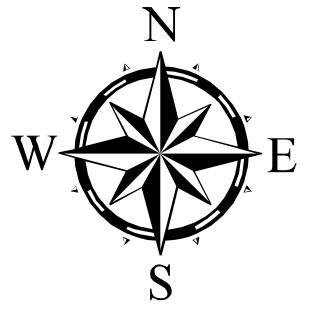
Walker Basin Rd West

0 800 1,600 3,200 Feet

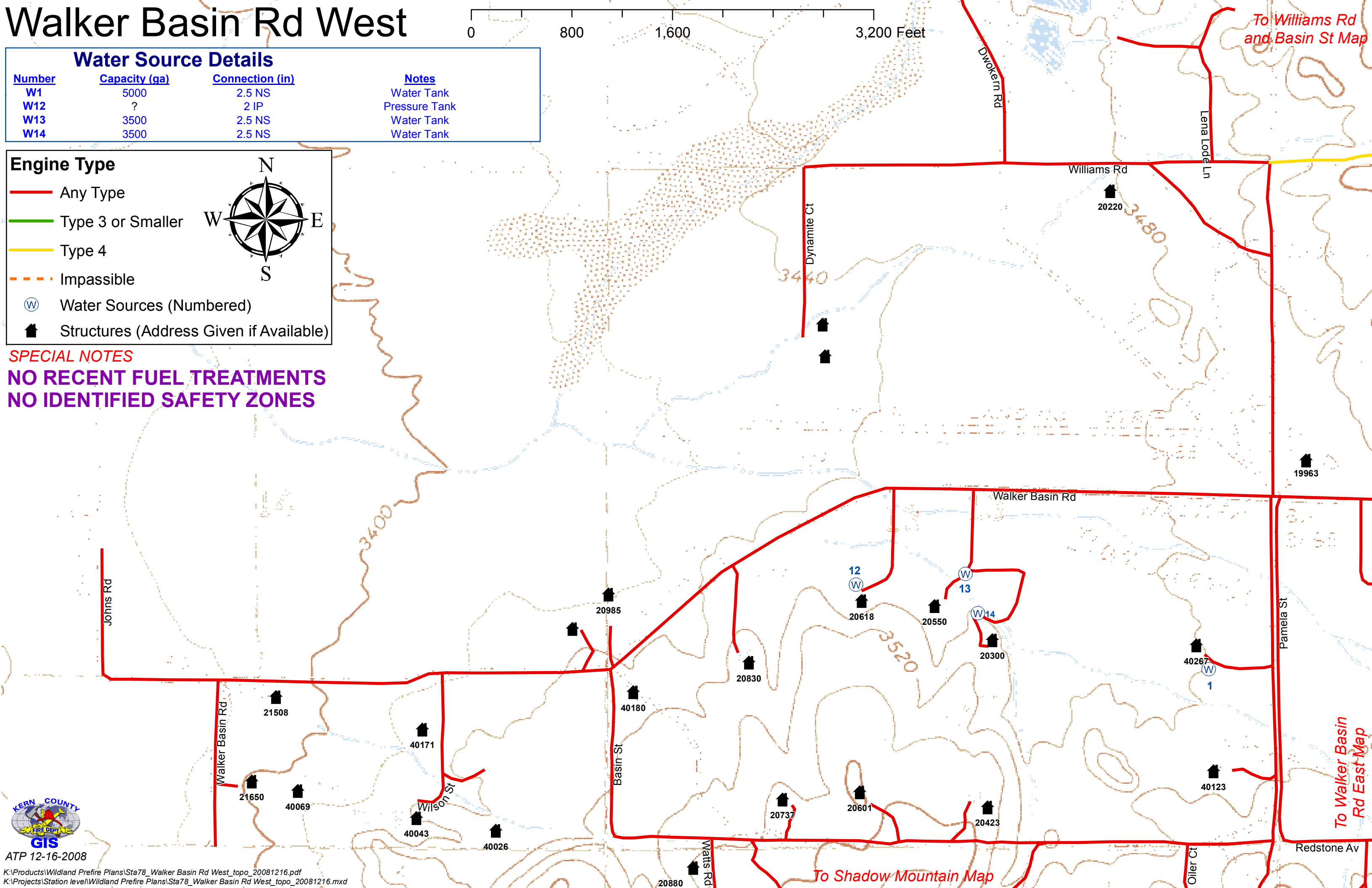
Water Source Details			
Number	Capacity (ga)	Connection (in)	Notes
W1	5000	2.5 NS	Water Tank
W12	?	2 IP	Pressure Tank
W13	3500	2.5 NS	Water Tank
W14	3500	2.5 NS	Water Tank

Engine Type

- Any Type
- Type 3 or Smaller
- Type 4
- - - Impassible
- W Water Sources (Numbered)
- Structures (Address Given if Available)



SPECIAL NOTES
NO RECENT FUEL TREATMENTS
NO IDENTIFIED SAFETY ZONES



To Williams Rd and Basin St Map

To Walker Basin Rd East Map

To Shadow Mountain Map



ATP 12-16-2008

K:\Products\Wildland Prefire Plans\Sta78_Walker Basin Rd West_topo_20081216.pdf
 K:\Projects\Station level\Wildland Prefire Plans\Sta78_Walker Basin Rd West_topo_20081216.mxd